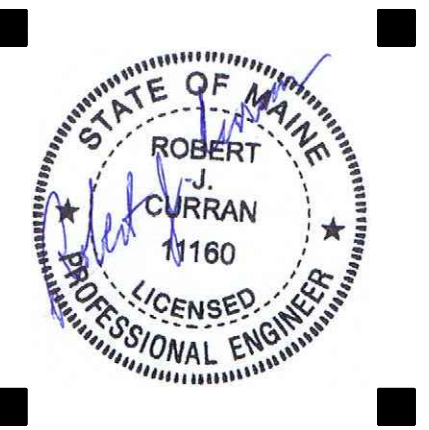




**PORT CITY ARCHITECTURE**

65 NEWBURY STREET  
PORTLAND, ME 04101  
207.761.9000



**Consultants:**

Swiftcurrent Engineering Services, Inc.  
10 Forest Falls Dr. - Unit 48  
Yarmouth, ME 04096  
(207) 847-9280  
contact Timothy D. Matthews, P.E.  
tim@swiftcurrenteng.com

PERMIT SET  
11-1-16

NOT FOR  
CONSTRUCTION

NEWPORT  
DEVELOPMENT  
ASSOCIATES

164 Middle St  
Portland, Maine

#	DATE	DESCRIPTION

Date Issued October 26th, 2016

Project Number 16202

Drawing Scale AS NOTED

**ELECTRICAL PLAN - SECOND FLOOR**

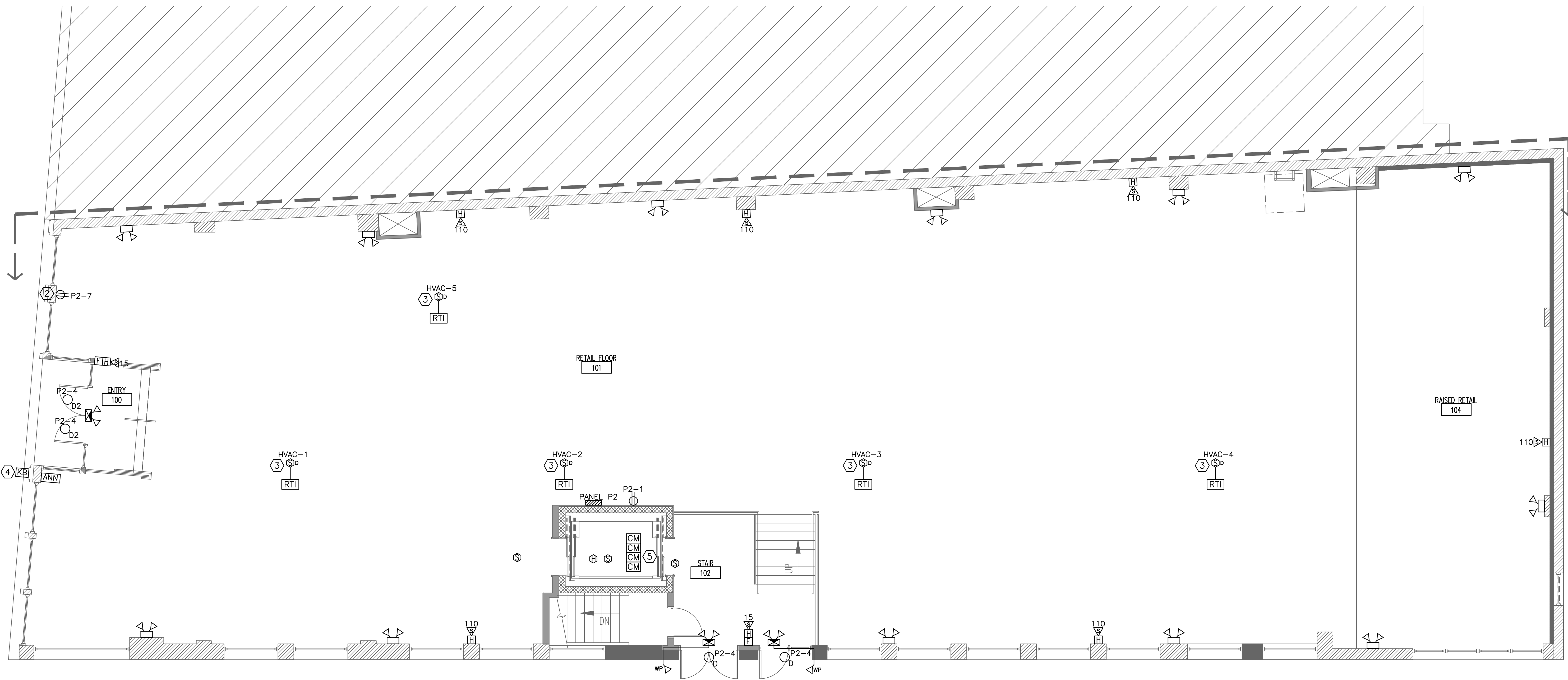
Drawn By JMD	<b>E1.2</b>
Checked By TDM	

**NOTES:**

1. SEE E0.0 FOR LEGEND, ABBREVIATIONS AND GENERAL NOTES.

**KEYED NOTES:**

- ① NOT USED.
- ② NOT USED.
- ③ COORDINATE RECEPTACLE MOUNTING AND LIFT POWER REQUIREMENTS WITH LIFT MANUFACTURER.
- ④ CONNECT DUCT SMOKE DETECTOR TO FIRE ALARM PANEL ZONE.
- ⑤ KNOX BOX. LOCATION TO BE COORDINATED WITH PORTLAND FIRE DEPARTMENT.  
FIRE ALARM CONTROL MODULES FOR ELEVATOR CONTROL INTERFACING. LOCATION TO BE DETERMINED.



**1 ELECTRICAL POWER & FIRE ALARM PLAN - FIRST FLOOR**  
SCALE: 3/16"=1'-0"

